



# Where opportunity creates success



University of  
Central Lancashire  
London

Prospectus 2025/26



# Contents

<b>Welcome</b>	4
<b>Location</b>	6
<b>Your Lecturers</b>	8
<b>Student Life</b>	10
<b>Support Whilst You Study</b>	12
Careers Service	13
<b>Entry Requirements</b>	18
<b>Student Finance, Fees and Scholarships</b>	20
<b>Our Courses</b>	24
Foundation Year	26
Psychology	28
Mental Health and Wellbeing	30
Health and Social Care	32
Public Health	34
Business and Marketing	36
International Business Management	38
Computing	40
<b>Small Print</b>	43

# Welcome to the University of Central Lancashire London



**The University of Central Lancashire traces its roots back to 1828 and leads the way in modern learning.**

We have been named as the 'University of the Year' at the Edufuturists Awards 2023 in recognition of the innovative and progressive practices across the educational sector. The University has a prominent history in the field of education, strives to empower every student with knowledge, attitudes and employability skills to reach their full potential in the future workplace.

The University of Central Lancashire in London (UCLan London) welcomed our first students in January 2024, and since then have witnessed the development of the suite of our degree courses. The curriculum is tailored in alignment with the national benchmark standards and sector demands. Our highly qualified and dedicated academic staff are drawn from the private and public sector with relevant practical experience. We are geared towards imparting values, expanding the boundaries of knowledge, as well as supporting learners to develop skills required to

enhance the prospects of graduates for future employment.

We take great pride in providing excellent learning opportunities for our students who have the desire, ambition and passion to learn and effect meaningful change to their future career. Choosing the right university is one of the most important decisions you will make, and we invite you to find out more about us through this prospectus and attending one of our open days - at UCLan London. Our commitment to excel in education and learning is uncompromising, and we look forward to welcoming you to the campus.

**Dr Teng Guan Khoo**  
Academic Director  
(Quality and  
Student Experience)

A handwritten signature in black ink, appearing to read 'Teng Guan Khoo'.

**Anita Steinberg**  
Academic Director  
(Education)

A handwritten signature in black ink, appearing to read 'Anita Steinberg'.



# Location

**Study at the University of Central Lancashire London and be in the heart of one of the most vibrant, creative and cosmopolitan cities in the world.**



UCLan London is in the Docklands area of East London. Opened in January 2024, we are located at the Import Building (E14 2BE). We are part of a 650,000 sq. ft newly transformed contemporary site in East London.

## Central and Connected

London is a city steeped in history where you will struggle to find a dull moment away from your studies. With a total student population of over 400,000, London offers an unrivalled multicultural experience and is one of the most popular student destinations in the world.



Our campus boasts a range of carefully curated amenities and superb transport links. Our facilities consist of open plan floor space with state-of-the-art design supported with the latest tech equipment to deliver an uncompromised education to UCLan London students.



**The Center for World University Rankings 2024 (CWUR) has placed us in the top 7% of universities worldwide.**



## Outstanding Amenities



- A range of supermarkets, cafes and food markets within minutes of the campus
- Dedicated areas for you to eat and drink between classes
- Wi-Fi is available throughout the building
- PureGym located on the ground floor, open 24/7
- Communal outdoor water garden
- Daily street food trucks

## How to get to our campus



East India DLR station is situated onsite, with the journey from platform to classroom only a few minutes walk.

From East India DLR, you can arrive in Canning Town in 2 minutes (Jubilee Line), Canary Wharf in 5 minutes (Jubilee Line and Elizabeth Line), and Stratford and Bank in 13 minutes (Central Line, Jubilee Line, Northern Line, London Overground, TfL Rail and Greater Anglia rail services).

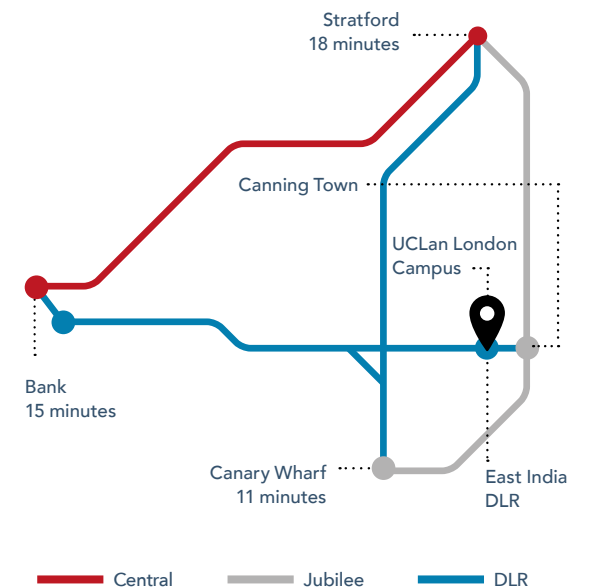
Our campus is just 15 minutes from Bank Underground Station and is a vibrant and well-connected hub in the heart of the Docklands.

Our campus is served by bus services D3, N550.

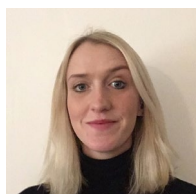
## Student Facilities



- State-of-the-art lecture theatres and seminar rooms
- Library
- Wellbeing Service
- A multi-faith room
- Large breakout areas to work or socialise
- Computer labs
- Multiple study pods, and booths perfect for group work or personal study
- Learning Resource Centre
- Dedicated areas with computers suitable for study groups or quiet study



# Your Lecturers

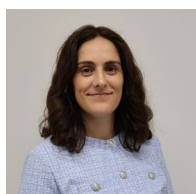


**Dr Stephanie Parsons BA, MA, PhD, FHEA, PGCERT HE, CPsychol**

Stephanie is a senior lecturer and course leader at UCLan London. Her areas of expertise include health studies and social psychology. She completed her PhD in 2020 which focused on the emotional management of suffering during the organ donation process. Her research has involved collaborating with NHSBT and presenting at various medical/sociological based conferences.

She is also co-convenor for the British Sociological Association specialist study group 'Deconstructing Donation' and is a chartered member of the British Psychological Society.

**"I believe in embedding academic literacies into my teaching which allows students to engage in 'real-world' activities and assessments."**



**Dr Rafaela de Brito, PhD, CELTA, AFHE**

Rafaela started teaching in higher education in 2011, while doing her PhD at the University of Southampton. Since then, she has taught on a range of courses in Portugal, Spain and the UK. Rafaela enjoys teaching research and academic skills at both undergraduate and postgraduate levels. She is particularly keen on providing students with experiences for practicing and reflecting on research methods and their significance. Her own research interests include academic literacies, academic integrity and teacher education.

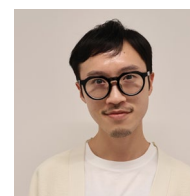
**"In the era of AI, I firmly believe in supporting students to understand the difference between learning and getting answers. Developing academic and research skills provides students with experiences that enhance their ability to evaluate information, communicate effectively and deepen their understanding of different topics. These are essential transferable skills which students can use to transform their academic work into a lifelong foundation that will allow them to solve problems in the future."**



**Tex Dunstan MBA, MSc, BA, FHEA**

Tex Dunstan has worked in higher education for thirty years at the interface of digital media, computing and business. A practitioner with international experience as a leader, teacher, mentor and business owner, Tex has delivered multi-million pound projects of substantial significance, complexity and risk with dexterity, resilience and empathy for the customer. Tex has an academic background in both computing and business and is currently course leader of both subject areas at UCLan London.

**"Running a business means applying your knowledge and skills in several domains like operations, strategy, HR, marketing and finance as well as the dynamic territory of technology. Investing in a business or computing course will equip you with the tools to succeed in rapidly evolving global environments and will deepen your awareness of key opportunities and risks as they emerge in the near future."**



**Mr NG Ki Fung, Dominic BA, MA, PGDE**

Before joining UCLan London, Dominic has spent over 10 years in Hong Kong developing, coordinating, and teaching vocational and academic English courses. He has extensive experience teaching students at Foundation level and is currently leading two Foundation-level modules, where he applies his expertise to support students' academic growth.

Dominic is keen to provide students with a positive learning experience by fostering a supportive and interactive environment. He encourages active participation, cultivates curiosity, and adapts lessons to meet individual needs, helping students build confidence and achieve academic success.

**"I believe that English for Academic Purposes (EAP) plays a crucial role in bridging the gap between general English proficiency and the specialised language skills required for higher education. By focusing on academic reading, writing, listening, and speaking, I aim to help students develop critical thinking and effective communication strategies. Through structured practice, students gain not only language skills but also the academic mindset needed to thrive in levels 4 to 6. My approach is student-centered, emphasising active engagement, collaborative learning, and personalised feedback, all of which support students' growth and readiness for the challenges of advanced academic study."**



# Student life at the University of Central Lancashire London

Our dedicated team of friendly and expert staff are here to support you every step of the way, offering more choice and creating more possibilities to help you flourish.

Whatever you are interested in studying, our courses offer you the opportunity you need to succeed in education, at work and for life.

Our goal is to ensure your success and empower you to achieve your aspirations, where opportunity creates success.

## Why study with us?

- We recognise that adult learners often balance multiple responsibilities, such as careers, families, and community engagements.
- Balancing life's demands? Our condensed timetable offers flexibility while studying.
- Accomplished, fantastic lecturers with real-world experience.
- Traditional classroom-based education with cutting-edge online resources.
- We understand that every learner is unique, and our dedicated support team is committed to helping you navigate your educational journey.

# Student Life

## Accommodation

Although we do not offer on-campus halls of residence, a range of accommodation options is available within a convenient commuting distance of the UCLan London. For further information, please visit our website at [london.uclan.ac.uk/student-life/accommodation](https://london.uclan.ac.uk/student-life/accommodation).

## Travel Bursary

We are aware that some student costs can be significant, even with the discounts available to them. This is why we offer a travel bursary for those students who have been actively engaging with both their face-to-face and online learning, have submitted / attempted all assessments and achieve a minimum **80% attendance** rate.

Eligible students can receive a payment of **£250 for each semester**, with the opportunity of receiving up to **£500 per academic year**. You can read the full terms and conditions of the travel bursary on our website.

 **£500 bursary available per Academic Year**



The University has risen 13 places in the 2024 Higher Education Policy Institute (HEPI) English Social Mobility Index, which measures how life chances of disadvantaged students are improved during their time at university. We have moved from 31st in 2023 to 18th out of 100 institutions in England in 2024



# Support Whilst you Study



**Our Student Services Team is here to support you and can help you throughout your studies at UCLan London.**



## Careers Service

UCLan London is committed to preparing students to equip themselves with the necessary knowledge, understanding of industry, self-reflective skills and professional attitudes to be employable graduates. UCLan London students are challenged to develop their work ethic, tune their analytical and problem-solving abilities and make their ambitions a reality.

Here at UCLan London we take great pride in giving students the tools to prepare for the world of work with the necessary academic knowledge, industry exposure and those all-important transferable skills. We strive to make sure students are prepared to enter the workplace with a number of different initiatives and services that we have on campus.

### This includes:

- Giving you advice and helping you find the right career, course, or training route to enable you to progress into rewarding graduate employment or postgraduate education.
- Helping you understand the skills, values, beliefs, ambitions, and experience you already have that will meet the specification for ideal job roles.
- Identifying gaps in your knowledge, training, and experience required for your dream role.

- Equipping you with confidence-building skills to develop your business networking, online presence, and career opportunities.

We have an in-house Careers Service team who work in-person and online to offer you practical help, with a range of career services to enable you to be your best and fulfil your career potential.

## Industry Exposure

### Explore Career Routes & Destinations:

We host employers and key professionals from a range of sectors who speak to students about their career journey, their companies, tips on how to secure a graduate job after university, so this means you will be able to gain insight from the professionals in your chosen industry. Occasionally they are actively recruiting, so come along and you might just secure your next role.

### Careers Coaching:

1 to 1 and group sessions to improve your skills and confidence.

- Exploring your next steps
- Career planning
- Gaining work experience
- Job application support
- Interview preparation
- PG study questions
- CV building and review

To contact our Careers Service team, you can send an email to [employability@london.uclan.ac.uk](mailto:employability@london.uclan.ac.uk)



## Director of Studies Office (DoS)

The Director of Studies (DoS) Office is dedicated to supporting your academic journey and ensuring your success throughout your time at UCLan London. Our team oversees students' academic welfare and engagement, promoting a supportive and inclusive environment where you can thrive.

We play a key role in monitoring your academic progress, encouraging active engagement, and upholding academic integrity. If challenges in your personal life impact your studies, we're here to help. The DoS Office provides a range of support services, including:

- Guidance on mitigation application.
- Advice on interruption (intermission) of studies when needed.
- Support with progression, re-sits, and creating tailored study plans if assessments are missed or failed.

For assistance, reach out to us at [ad@london.uclan.ac.uk](mailto:ad@london.uclan.ac.uk).

We're here to ensure you stay on track and achieve your academic goals.



## Learning Resource Centre

The Learning Resource Centre (LRC) provides online and onsite support for students. The LRC support includes Zoom, Moodle/Online Learning, The Bookshelf, Digital Library, Office 365 download, and other technical support.

The LRC team are available online through Zoom live support. The LRC also run IT workshops in Word, Excel, and PowerPoint. As well as online, the team is also available on-site at the Learning Resource Centre.

[learningresources@london.uclan.ac.uk](mailto:learningresources@london.uclan.ac.uk)



## Disability and Inclusion Team

Our Disability and Inclusion team is a dedicated support service for students who have disabilities, long term medical, mental health conditions, and/or learning difficulties. We implement reasonable adjustments for students to ensure that no one is disadvantaged during their studies.

Reasonable adjustments are support strategies that we put in place for specific assessments, and in some cases, during your lectures depending on the students needs.

The Disability and Inclusion team can also advise you about Disabled Student's Allowance (DSA) and whether you are eligible to apply for it. If you have already been approved for DSA, the Disability and Inclusion team can implement necessary adjustments for you as outlined by your study needs assessment. We can also provide information about other benefits you can receive if you have been recently diagnosed with a disability, long-term health condition or learning difficulty.

If you would like to get in touch with the Disability and Inclusion team, please email us on [disabilityandinclusion@london.uclan.ac.uk](mailto:disabilityandinclusion@london.uclan.ac.uk)



## Disability and Dyslexia Advisor

The Dyslexia and Disability Advisor can offer ADHD and dyslexia pre-screenings if you wonder whether you have either of these conditions. A pre-screening does not result in an officially recognised medical diagnosis but can help you decide whether you would like to have a full diagnostic assessment. We can provide advice on where to get a full diagnostic assessment.

- Need access to a Disability and Dyslexia Advisor' on their Summary of Reasonable Adjustments (SORA).
- Would like to explore screening and/or a referral for dyslexia and/or other specific learning difficulties.
- Would like to discuss disability support.
- Require help with navigating the Disabled Students Allowance application process.



**We've been ranked 3rd in the UK for the mental health support we give to our students.**







## Wellbeing Team

At UCLan London, we want your time here to be an enjoyable experience, however, we recognise that sometimes individuals may experience health and or wellbeing issues. Our wellbeing team offers two types of support, namely Wellbeing Advisory Service and Counselling Service.

### Student Advisors

Our wellbeing student advisors are here to support you through any wellbeing difficulties. Wellbeing student advisors will listen to your needs and will work with you to devise a plan of support to support. If you would like to discuss your wellbeing needs further or wish to access a Wellbeing Advisor, please self-refer by emailing us.

### Counselling Service

Additionally, we offer a professionally qualified counselling service, providing a safe space to talk through any emotional difficulties or life challenges you may be experiencing. Students can self-refer to the service by contacting us. This includes issues such as:

- low mood and anxiety
- bereavement,
- low self-esteem
- family or relationship difficulties

[studentwellbeing@london.uclan.ac.uk](mailto:studentwellbeing@london.uclan.ac.uk)



## Personal Tutor

At UCLan London, your personal tutor (PT) will be allocated to you at the very start of your degree. It is important to take note of their name and contact details as you may need to reach them in the near future. Your PT can provide you with advice on your academic progress and give you guidance on how to maximise your opportunities at UCLan London.

Your PT will also help you ease into university life and will make it as comfortable for you as possible so that you adapt better to your new surrounds and get the relevant help where needed from the relevant department.

If there are queries your PT can't help you with themselves, you will be directed you to the right department. Your PT can be reached via email.

### Name of your Personal Tutor (PT)

---

### Contact E-mail

---



## Finance Department

At UCLan London, we have a dedicated finance department who are here to help to resolve all of your finance-related queries. The finance department can help assist with queries related to loans, grants, Disabled Student Allowance and much more.

You can contact the finance department via email at [finance@london.uclan.ac.uk](mailto:finance@london.uclan.ac.uk)



## iCentre

The iCentre is here to make sure your student experience at UCLan London is enjoyable, by dedicating the time and effort to make sure you are informed on all areas of student life.

The iCentre can assist you with student discounts, official student letters, attendance cards, submission support and technical challenges.

You can contact the iCentre via email at [iCentre@london.uclan.ac.uk](mailto:iCentre@london.uclan.ac.uk)



## Student Finance Confirmation

All eligible students can receive a Tuition Fee Loan and a Maintenance Loan to help cover finances over the duration of their studies.

It can take up to six weeks to process an application, depending on how quickly you can gather the correct information required.

Once your application has been approved and you have completed your registration, the university will send Student Finance a registration confirmation and an attendance confirmation. Once confirmation has been sent to Student Finance, you should receive your payment within 3-5 working days.

To ensure you have completed all the necessary steps for Student Finance Confirmation, please ensure you have completed the following;

- Registered on VLE
- Provided an up to date copy of your Passport with your application
- Attended Welcome Week
- Completed UCLan London enrolment task.

# Entry Requirements



## A levels

Grade	Tariff points
<b>A*</b>	<b>56</b>
<b>A</b>	<b>48</b>
<b>B</b>	<b>40</b>
<b>C</b>	<b>32</b>
<b>D</b>	<b>24</b>
<b>E</b>	<b>16</b>

Applicants with alternative qualifications, whether from the UK or abroad, can find detailed information on our website. If your qualification is not listed, we encourage you to contact UCLan London admissions to confirm your eligibility.

All applicants must have a minimum of three GCSEs Maths and English at grade C/4 or above. For those whose first language is not English and who have not previously studied in the UK, an IELTS score of 6.0 or an equivalent qualification is required.

Please note that our entry requirements are intended as a guide. Our admissions team will assess your overall suitability for the course, taking into account your entire application. We evaluate each applicant individually, considering educational qualifications, relevant work experience, and personal circumstances.

## 96 UCAS Tariff Points

**Alternatively UCLan London will consider UCAS Tariff points from the following qualifications:**

- BTEC Level 3 Diplomas
- Access to HE
- Scottish Highers
- Irish Leaving Certificate
- International Baccalaureate

Please contact [admissions@london.uclan.ac.uk](mailto:admissions@london.uclan.ac.uk) for more information.

# Student Finance, Fees and Scholarships



## Our Fees

Our fees are subject to change at any time and are reviewed annually – this includes changes due to government policy. As of March 2025, our tuition fees are:

## Foundation Year

£9,535 per year (UK/EU Fees)

£5,760 per year (UK/EU Fees)

\*The tuition fees vary for each course. Please refer to the relevant course page for the specific fee details.

## Undergraduate Degree

£9,535 per year (UK/EU Fees)

## Student Loans

As a student, you are eligible for loans from Student Finance England to support you while you study; together these are your student loan. Your student loan comprises a tuition fee loan and a maintenance loan, and a postgraduate loan if applicable.

If starting your first undergraduate degree in 2025/26, you'll be on Plan 5 for your student loan. For this plan, you won't repay any of your loan back until you earn over £25,000 per year pre-tax.

The threshold for how much you need to earn to repay your loan changes annually in April. This information is correct as of March 2025 but is subject to change.

## Maintenance Loans

As well as a Tuition Fee Loan, you can apply for a Maintenance Loan from Student Finance England too.

The Maintenance Loan you receive depends on:

- Where you live when studying
- Your family household income

## Tuition Loans

Tuition Fee Loans can be obtained from Student Finance England and can be used to pay the cost of your tuition fees. You can apply for a Tuition Fee Loan through Student Finance England; please refer to the website [gov.uk/student-finance](https://www.gov.uk/student-finance) to check deadlines and eligibility.





**UCLan London offers a variety of scholarships and financial support to assist you throughout your studies.**

### The Travel Bursary

The Travel Bursary has been designed to help you cover the costs of studying at university in the city each semester. Eligible students can receive a payment of **£250 for each semester**, with the opportunity of receiving up to **£500 per academic year**. To see the full range of scholarships available, visit our website.

 **£500 bursary available per Academic Year**

### Top Achievers

Scholarships of **£2,000** are available for the overall Top Achievers in Year 0 (Foundation Year), Year 1 and Year 2.

The winners are presented with their scholarships during our Top Achievers event which is hosted twice a year. The scholarship is applied to tuition fees for the next academic year.

### Merit Scholarship

Merit Scholarships of **£1,000** are available for UK and eligible EU/EEA undergraduate students achieving BBB grades or above (120 UCAS points).

It is automatically awarded to eligible students upon registration as a UCLan London student.



# Our Courses

The University of Central Lancashire London is leading the way in modern learning through our contemporary educational model.

Across our courses, we aim to provide a relevant and comprehensive education.

Many of our academic staff remain actively involved in their practice, which enables them to keep their modules relevant and stimulating.

## Timetable

All students will have a 2-days a week class timetable for standard delivery and a 3-day timetable for evening and weekend delivery. Outside of classes, you will have homework and self-directed study to complete.



### Standard Timetable

Monday, Tuesday, Wednesday, Thursday & Friday

**Morning Lecture (AM)**

10:00 - 13:00

**Lunch Break**

13:00 - 14:00

**Afternoon Lecture (PM)**

14:00 - 17:00

### Evening and Weekend Timetable

Tuesday, Thursday & Saturday

**Tuesday & Thursday Evening Lecture (EV)**

18:00 - 21:00

**Saturday Morning Lecture (AM)**

10:00 - 13:00

**Lunch Break**

13:00 - 14:00

**Saturday Afternoon Lecture (PM)**

14:00 - 17:00

# Foundation Year

## ENTRY REQUIREMENTS

40 UCAS Tariff Points

## DURATION

4 Years

## START

September, January, May

## DELIVERY

Campus Taught

## Course Overview

Our degrees with a foundation year have been specifically designed to ensure that candidates gain the skills needed to succeed at degree level.

For students who do not meet our standard entry requirements for admission to one of our undergraduate degree courses, UCLan London offers the option of a four-year degree with a foundation year.

Prospective students should expect to undertake significant amounts of reading and independent study outside of the classroom (approximately 18 hours per week during term time).

Upon successful completion of the foundation year, you will automatically progress to Year 1 of your desired course.

## Key Features

If you are looking to change career or simply return to education, then this is the course for you.

Modules help to develop skills in writing assignments, mathematics, computing, public speaking and presenting.

Our foundation years ensure that you are introduced to and prepared for the academic workload offered within our degree courses.

## Assessment

- You'll complete four 30-credit foundation year modules, developing key higher education skills.
- In each trimester, you will study two modules and undertake assessments, including examinations, written assignments (up to 1,500 words), and practical assessments.

The foundation modules differ for each course. Please refer to the individual course page for details on specific foundation year modules.



# BSc (Hons) Psychology

## DELIVERY

Campus Taught  
Standard Delivery

### ENTRY REQUIREMENTS

96 UCAS tariff points

### UCAS CODES

3 years - ULPY  
4 years with foundation year - ULPF  
Institution: C33

### START / FEES

September, January, May  
Foundation Fee - £9,535  
Level 4, 5, 6 Fees - £9,535

### Course Overview

This Psychology degree offers an extensive outlook on exploring and understanding why people think, feel and behave as they do. The knowledge and skills you gain from this degree can be utilised across a wide range of career paths that positively impact the lives of others, in public, private, and healthcare domains.

### Key Features

- You will develop an informed understanding of contemporary issues in psychology and engage in debates about a diverse range of topics identified on a local, national and global scale.
- A variety of coursework-based assessment approaches used, such as lab reports, research proposals, essays and portfolios.
- Learning and teaching activities will enable you to engage critically in the programme content, apply your independent reading to the module lectures and engage directly with your lecturers and classmates.
- Lab based practical assessments will provide you with the opportunity to demonstrate your competencies through research design and conducting practical assessments.

### Modules

#### Foundation Year

- Data Skills
- Research Skills
- Communication Skills
- Professional Development for Practitioners

#### Year 1

- Academic and Professional Skills
- Introduction to Social and Developmental Psychology
- Introduction to Biological and Cognitive Psychology
- Introduction to Psychological Research Methods

#### Year 2

- Advanced Social and Developmental Psychology
- Advanced Research Methods
- Advanced Biological and Cognitive Psychology
- Essential Issues in Psychology, History and Individual Differences

#### Year 3

- Psychology of Everyday Life
- Psychological Applications in Professional Contexts
- Forensic and Clinical Psychology
- Research Project



A BSc (Hons) Psychology degree equips you with the knowledge and skills to explore human behaviour, and it can be applied in various fields, such as clinical, counselling, education, health, occupational, sport, and forensic psychology.

You'll find opportunities in public and private healthcare, education, mental health support, social work, therapy, and counselling, including advisory, research, treatment, and therapeutic roles.

### Career Paths

Our Psychology programme opens doors to a wide range of career opportunities, some of which may require further training/study, including:

- Clinical Psychology
- Counselling
- Human Resources
- Mental Health and Wellbeing Practice
- Occupational Therapy
- Policy Development
- Market Researchers
- User Experience (UX) Specialists
- Training and Development Professionals
- Psychological Statistician
- Artificial Intelligence and Human-Computer Interaction
- Business and Organisational Psychology
- Data Science and Analytics
- Cyberpsychology

BSc (Hons)

# Mental Health and Wellbeing

DELIVERY  
Campus Taught  
Standard Delivery

## ENTRY REQUIREMENTS

96 UCAS tariff points

## UCAS CODES

3 years - ULMH

4 years with foundation year - ULMF

Institution: C33

## START / FEES

September, January, May

Foundation Fee - £9,535

Level 4, 5, 6 Fees - £9,535

## Course Overview

Our Mental Health and Wellbeing degree is outlined to give you the knowledge and skills to identify, understand and respond creatively to the various factors that influence mental health and wellbeing.

## Key Features

- Curriculum is designed to equip you with current knowledge and skills applicable to and transferable across a diverse range of working contexts in the public, private and third sector services.
- A range of authentic assessments that align with professional practice, such as portfolios, risk assessments, intervention plans, and interviews.
- The academic lecturing team draw from their diverse range of professional practice and industry experience to enhance your learning opportunities.
- A focus on personal and professional development, to support and enable you to pursue careers supporting individuals, organisations, and, communities, maintain and promote mental health and wellbeing.

## Modules

### Foundation Year

- Data Skills
- Research Skills
- Communication Skills
- Professional Development for Practitioners

### Year 1

- Academic and Professional Skills
- Mental Health and Wellbeing in Context
- Positive Psychology and Resilience
- Mental Health, Wellbeing and the Individual

### Year 2

- Children and Young People's Mental Health
- Adult Mental Health
- Mental Health in the Workplace
- Skills and Interventions of the Mental Health Practitioner

### Year 3

- Global Perspectives and Cultural Comparisons
- Community Health and Wellbeing in Practice
- Mental Health and the Media
- Undergraduate Project (Health and Social Contexts)



A Mental Health and Wellbeing degree aims to equip you with the knowledge and skills to identify, understand and respond creatively to the various factors that influence mental health and wellbeing.

By examining biological, psychological, social, cultural and environmental factors that influence mental health and wellbeing throughout individual lives, and developing an understanding between clinical, non-clinical and individuals' perspectives, this will enable graduates to explore a wide range of mental health and wellbeing services across public, private and third sectors to improve, maintain and promote mental health and wellbeing, and make positive differences to the lives of individuals and their communities.

## Career Paths

Graduate employment opportunities that might be available to graduates of the programme could include:

- Education Mental Health Practitioner
- Homelessness Prevention Officer
- Community Development Worker
- Healthcare Manager
- Health Promotion Specialist
- NHS Children and Young People's Mental Health Services
- Primary Care Graduate Mental Health Worker
- Progression to PG Study to access further careers, eg. Nursing, Public Health, Social Work, Teaching, Psychological Wellbeing Practitioner



## BSc (Hons)

# Health and Social Care

### DELIVERY

Campus Taught  
Evening and Weekend only

### ENTRY REQUIREMENTS

96 UCAS tariff points

### UCAS CODES

3 years - ULHS  
4 years with foundation year - ULSF  
Institution: C33

### START / FEES

September, January, May  
Foundation Fee - £9,535  
Level 4, 5, 6 Fees - £9,535

### Course Overview

Our Health and Social Care degree equips you with the skills to manage and respond to diverse health and social challenges. You'll gain practical experience and insights into areas like human anatomy, mental health, and health promotion, preparing you for various careers in healthcare or further specialised studies.

### Key Features

- Curriculum is designed to equip you with current knowledge and skills applicable to and transferable across a diverse range of working contexts in the public, private and third sector services.
- A range of authentic assessments that align with professional practice, such as portfolios, risk assessments, intervention plans, and interviews.
- The academic lecturing team draw from their diverse range of professional practice and industry experience to enhance your learning opportunities.
- A focus on personal and professional development, to support and enable you to pursue careers supporting individuals, organisations, and communities maintain and promote mental health and wellbeing.

### Modules

#### Foundation Year

- Data Skills
- Research Skills
- Communication Skills
- Professional Development for Practitioners

#### Year 1

- Academic and Professional Skills
- Health and Social Care Professionals
- Fundamentals of Human Anatomy and Physiology
- Health and Safety in Practice

#### Year 2

- Lifespan Development
- Safeguarding in Practice
- Mental Health and Wellbeing
- Health Promotion

#### Year 3

- Inequalities and Social Justice
- Comparative Healthcare Systems
- Leadership and Change Management
- Undergraduate Project (Health and Social Contexts)



Our BSc (Hons) Health and Social Care degree is designed to equip you with the knowledge and skills to effectively manage and respond to the complex factors influencing health and social care. By examining areas such as human anatomy, mental health, and health promotion, you will be able to understand their impact across various settings.

You'll be prepared to tackle a range of challenges in both public and private sectors. This course enables you to develop a comprehensive understanding of care management, social justice, and healthcare systems, preparing you to make a positive difference in individuals' lives and contribute to the wellbeing of communities.

### Career Paths

Possible career paths for graduates of the programme may include:

- Assistant Practitioner (eg., Occupational Therapy Assistant)
- Psychological Wellbeing Practitioner
- Primary Care Graduate Mental Health Worker
- Health Promotion Specialist
- Community Development Worker
- Education Welfare Officer
- Medical Sales Representative

Associated Further Study for Professional (Registration) Qualifications:

- Pathway to accelerated Nursing Degree
- Graduate programme for Social Work Degree

# BSc (Hons) Public Health

DELIVERY  
Campus Taught  
Standard Delivery

## ENTRY REQUIREMENTS

96 UCAS tariff points

## UCAS CODES

3 years - ULPH  
4 years with foundation year - ULHF  
Institution: C33

## START / FEES

September, January, May  
Foundation Fee - £9,535  
Level 4, 5, 6 Fees - £9,535

## Course Overview

Learn to promote health and wellbeing with our BSc Public Health degree. Gain the skills to improve public health and reduce inequalities through research, analysis, planning, and implementation. This programme equips you with the knowledge to drive positive change in communities, focusing on health improvement, protection, and policy development.

## Key Features

- It offers the opportunities for students to develop contemporary knowledge and understanding of the diverse areas of practice contributing to public health and develop an appreciation of the wider determinants of health inequalities, social policy, related theories and their application to public health.
- Through the delivery of a contemporary curriculum, students will develop their skills as well as theoretical understanding of the core and wider public health concepts, contexts and approaches, applying these to 'real world' scenarios.
- The programme takes a research-informed approach, using evidence-based methods to blend theory with real-world applications. You'll explore planning, strategies, and public health in action, covering key themes like diet, nutrition, healthy settings, and the media.

## Modules

### Foundation Year

- Data Skills
- Research Skills
- Communication Skills
- Professional Development for Practitioners

### Year 1

- Academic and Professional Skills
- Introduction to Public Health
- Health Assets and Skills
- The Public Health Practitioner

### Year 2

- Health Policy and Systems
- Lifestyle and Health Promotion
- Epidemiology and Population Health
- Media and Health Technology

### Year 3

- Global Health in Context
- Leadership and Managing Services
- Public Health in Practice
- Public Health Major Project



Our BSc (Hons) Public Health degree aims to provide students with the knowledge and skills to improve and protect the health of the public and reduce health inequalities between individuals, groups and communities through co-ordinated action. You'll learn to research, analyse, report, plan and implement measures for health improvement, health protection and healthcare.

## Career Paths

Public health has never been more important, relevant and wide-ranging, and there's a host of career paths to follow, some of which may require further training/study, including:

- Public health practitioner
- Youth worker
- Drug and alcohol worker
- Public health information officer or analyst
- Health improvement practitioner
- Health protection practitioner
- Community development or outreach worker
- Health communications officer.

**BSc (Hons)**

# Business and Marketing

**DELIVERY**

Campus Taught  
Evening and Weekend only

**ENTRY REQUIREMENTS**

96 UCAS tariff points

**UCAS CODES**

3 years - ULBM

4 years with foundation year - ULBF

Institution: C33

**START / FEES**

September, January, May

Foundation Fee - £5,760

Level 4, 5, 6 Fees - £9,535

**Course Overview**

Our Business and Marketing degree provides a comprehensive foundation in business principles while honing your skills in key marketing areas such as digital marketing, consumer behavior, and branding. You'll gain practical experience in business finance, human resources, and marketing communications, helping you discover your ideal career path.

**Key Features**

- Our teaching is guided by current industry practices and research in business management and marketing, ensuring you receive relevant and up-to-date knowledge.
- The programme combines core business principles with specialised marketing skills, preparing you for roles in business and marketing.
- You will benefit from assessments that reflect real-world business and marketing scenarios, including campaign development, market research, and strategic planning.
- You will engage with industry professionals, gaining insights into market trends and boosting employability through tailored support and career-focused assignments.

**Modules**

**Foundation Year**

- Data Skills
- Research Skills
- Communication Skills
- Professional Development Skills

**Year 1**

- Academic & Professional Skills
- Introduction to Business
- Economics for Business
- Business Finance

**Year 2**

- Managing Human Resources
- Principles and Practices of Marketing
- Legal Aspects of Business
- Marketing Communications and Branding

**Year 3**

- Executing Business Strategy
- Consumer Behaviour
- Digital Marketing
- Undergraduate Project (Business Contexts)



Our BSc (Hons) Business and Marketing degree offers a unique opportunity to advance your career by equipping you with the knowledge and skills needed to succeed in the competitive business world. The programme covers key areas such as branding, brand management, market research, consumer behaviour, and digital marketing, with a focus on strategies and techniques that drive success.

Led by lecturers with solid hands-on industry experience, you'll also explore the role of digital marketing and the key metrics for measuring effectiveness, preparing you for a dynamic career in business and marketing.

**Career Paths**

The BSc (Hons) Business and Marketing course offers you choices to pursue a wide range of careers, or to specialise as a postgraduate, including:

- Advertising Account Manager
- Copywriter
- Market Researcher
- Marketing Executive
- Media Planner or Buyer
- Social Media Manager
- Event Manager
- Public Relations Account Manager
- Product Manager

## BSc (Hons)

# International Business Management

### ENTRY REQUIREMENTS

96 UCAS tariff points

### UCAS CODES

3 years - ULIB  
4 years with foundation year - ULIF  
Institution: C33

### START / FEES

September, January, May  
Foundation Fee - £5,760  
Level 4, 5, 6 Fees - £9,535

### Course Overview

Our International Business Management degree equips you with essential knowledge in globalisation, sustainability, and intercultural communication. Through real-world case studies and industry-experienced lecturers, you'll explore key areas like finance, marketing, HR, and information systems.

### Key Features

- You will gain in-depth knowledge of international business practices, including finance, marketing, HR, and information systems.
- Engage with practical case studies led by experienced lecturers, providing insights into real business challenges and solutions.
- Study crucial contemporary issues such as globalisation, sustainability, and intercultural communication, and learn how to manage these effectively.
- Apply the skills and knowledge gained throughout the course in a research project, enhancing your academic and professional expertise.
- The course develops essential skills like communication, critical thinking, and independent learning.

### Modules

#### Foundation Year

- Data Skills
- Research Skills
- Communication Skills
- Professional Development Skills

#### Year 1

- Academic and Professional Skills
- Introduction to Business
- Economics for Business
- Business Finance

#### Year 2

- Managing Human Resources
- Principles and Practices of Marketing
- Legal Aspects of Business
- Business Technology

#### Year 3

- Executing Business Strategy
- Managing Business Operations
- Managing International Business
- Undergraduate Project (Business Context)

### DELIVERY

Campus Taught  
Evening and Weekend only



A BSc (Hons) International Business Management degree provides you with the knowledge and skills to navigate the complexities of global business. This degree is applicable across various sectors, including finance, marketing, human resources, and operations management.

You'll find opportunities in multinational corporations, financial services, technology firms, consulting, and international trade. Roles may include business analysis, project management, strategic planning, and international marketing, research, strategy development, and operational management.

### Career Paths

In today's tough jobs market, graduates need to stand out from the crowd to successfully secure that all important first full-time job after university. We believe your degree from UCLan London will enhance your employability.

- Business Analyst
- Accountant
- Business Consultant
- Product Manager
- Project Manager
- Risk Manager
- Social Media Manager
- Stockbroker
- Human Resource Officer

# BSc (Hons) Computing

**DELIVERY**  
Campus Taught  
Standard Delivery

## ENTRY REQUIREMENTS

96 UCAS tariff points

## UCAS CODES

3 years - ULCO  
4 years with foundation year - ULCF  
Institution: C33

## START / FEES

September, January, May  
Foundation Fee - £9,535  
Level 4, 5, 6 Fees - £9,535

## Course Overview

Our Computing degree is designed to equip you with a broad understanding of many computing principles and to build skills in areas like programming, database management, software development, information security and network management. This will enable you to explore which part of the diverse computing industry you want to kick-start your career in.

You will spend a lot of time in our dedicated computing suite, learning on industry-standard equipment and software, so you can be confident that you will graduate with the attributes in demand within the computing industry.

## Key Features

- Our teaching is informed by research and industry practice in areas such as software engineering, networks and communications, and cyber security.
- It offers a flexible, industry-focused computing programme of study to prepare you with knowledge, understanding and employability skills suitable for graduate entry into the industry or further professional study.

## Modules

### Foundation Year

- Computing Skills
- Research Skills
- Communication Skills
- Professional Development in Computing

### Year 1

- Academic & Professional Skills
- Computing Principles
- Computer Programming
- Database Design & Implementation

### Year 2

- Software Development
- Information Systems Security
- Networks & Communications
- Business Intelligence

### Year 3

- IT Project & Product Management.
- Sustainability, Ethics & Professional Practice
- Enterprise Systems
- Major Project (Computing)



The BSc (Hons) Computing degree provides a broad understanding of computing principles, including programming, database management, software development, and information security. You'll gain hands-on experience in our dedicated computing suite, using industry-standard equipment and software. Co-created with employers and the British Computer Society, this course ensures you graduate with the skills and attributes in demand within the computing industry.

## Career Paths

The BSc (Hons) Computing course provides you with a broad and relevant understanding of the major components of an in-demand subject and offers you choices to pursue a wide range of careers, or to specialise as a postgraduate, including:

- Analyst and management jobs in information systems, computer systems, security, business and data.
- Network administrator
- Network engineer
- Network manager
- Database administrator
- UI/UX designer
- Web developer
- Software developer
- Apps developer
- Technical sales/support engineer
- Hardware or software engineer
- DevOps Engineer
- Machine learning engineer
- Systems programmer
- Multimedia programmer
- Robotics engineer
- Games developer



## Small Print

The University of Central Lancashire London processes personal data and sensitive personal data on all applicants and enrolled students in computer and paper-based administrative systems. All such data is processed in accordance with UK Data Protection Legislation.

This information document may include links to external websites run by other organisations. We are not responsible for the privacy practices of these other websites, so you should read their privacy policies carefully.

### **Before you apply:**

This prospectus describes the courses and awards offered by the University of Central Lancashire London. It was prepared in March 2025\*, and refers to courses which will be available in September 2025, January 2026 and May 2026. We have taken considerable care in the preparation of this prospectus to ensure its accuracy at the time of printing, but please refer to our website which contains further information about each course, including any updates to the course itself. The online course catalogue can be viewed on our website.

The University of Central Lancashire London endeavours to take all reasonable steps to provide education services in the manner set out in this prospectus. It does not, however, guarantee the provision of such services. In exceptional circumstances, it may be necessary to make changes to the education services due to industrial action, changes in government policies, changes to funding or the law, for staffing, financial, regulatory or academic reasons,

or other events beyond the control of us which interfere with its ability to provide education services. We will take reasonable steps to minimise the resulting disruption to those services. The University of Central Lancashire London cannot be held responsible for failure/delay in performing obligations caused by things beyond its reasonable control, including, but not limited to industrial action.

### **Notice to potential students:**

Should you become a student at the University of Central Lancashire London an offer letter will be sent to you, and this shall constitute a term of any contract between you and the University of Central Lancashire London. Any offer of a place made to you by the University of Central Lancashire London is made on the basis that, in accepting such an offer, you signify your consent and agreement to abide by the Rules, Regulations and Procedures for Students as a term of any such contract.

You will also receive additional documents detailing the teaching, examination, assessments and other education services offered by the University of Central Lancashire London.

### **Complaints**

In the event that you feel that any information in this prospectus is inaccurate or misleading, you should write to:

*Head of Marketing,  
University of Central Lancashire London  
6th Floor, Import Building,  
2 Clove Crescent,  
London, E14 2BE*



University of  
Central Lancashire  
London

University of Central Lancashire London,  
Import Building,  
2 Clove Crescent,  
London, E14 2BE